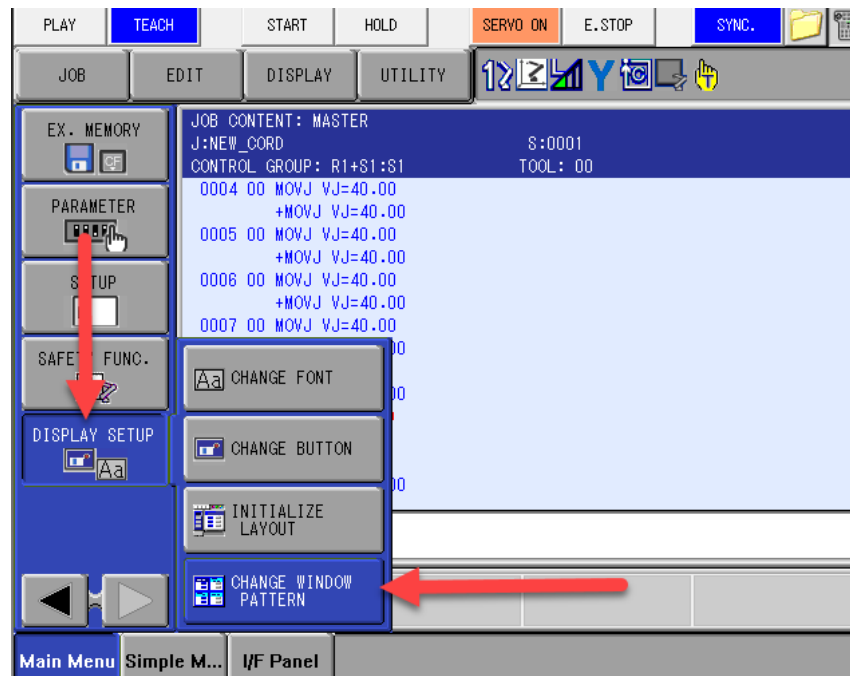


Using Multiple Screens with Display Setup

There are times when programming and debugging when using multiple screens can be very useful. Your Yaskawa programming pendant has a function for this, and more than one way to use it.

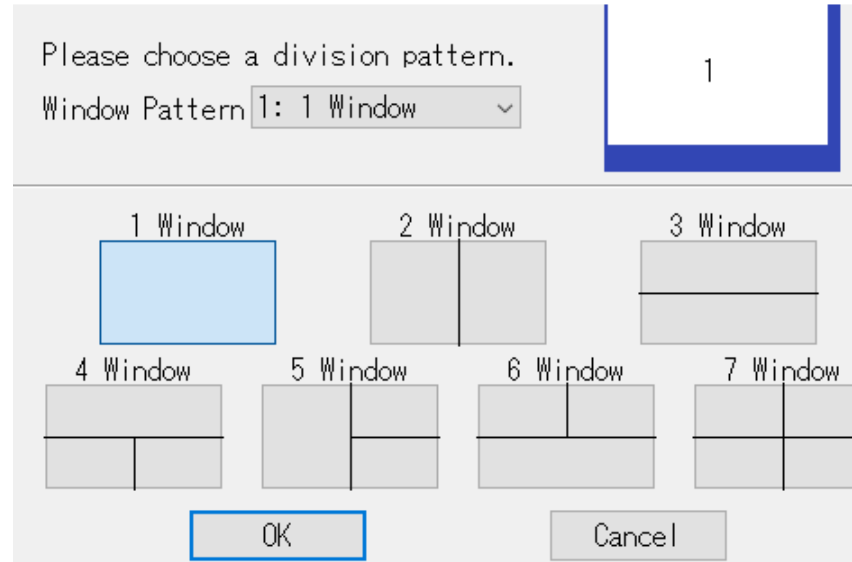
To enable this function first we need to decide the window layout/ how many screens we want to use.

1. First navigate to DISPLAY SETUP and choose CHANGE WINDOW PATTERN.



This document captures ideas, experiences, and informal recommendations from the Yaskawa Partner Support team. It is meant to augment – not supersede manuals or documentation from motoman.com. Please contact the Partner Support team at partnersupport@motoman.com for updates or clarification.

2. This will open the screen layout box. Here you can choose up to four screens to view at once, and in different configurations. Choose the number of windows and the layout you wish to use and press OK.



This document captures ideas, experiences, and informal recommendations from the Yaskawa Partner Support team. It is meant to augment – not supersede manuals or documentation from motoman.com. Please contact the Partner Support team at partnersupport@motoman.com for updates or clarification.

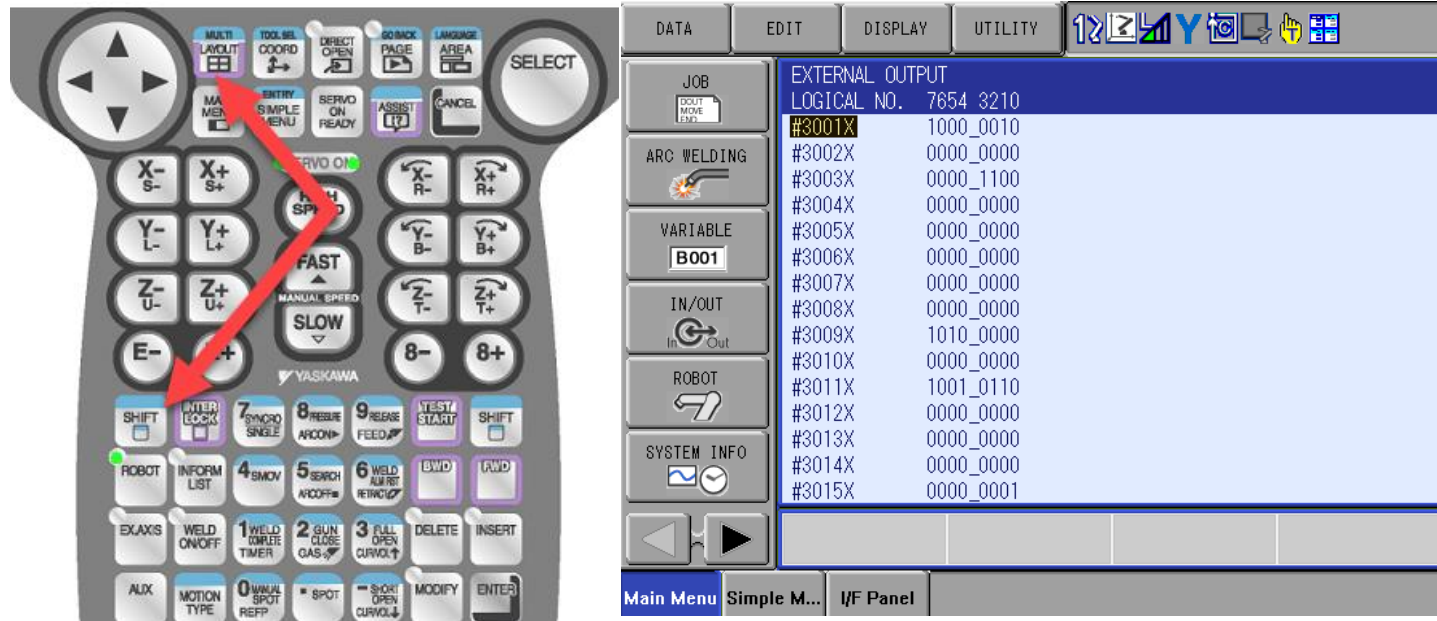
- Next you will choose which display you wish to view on each screen. You can make selections such as Jobs, Inputs or Outputs, or even the Ladder Program. Click on a screen to highlight that section, then select the display you wish to view.



You can now view multiple displays all at once. To cursor or to interact with each screen, you will need to press the screen first to select it active, and then you will be able to control that screen.

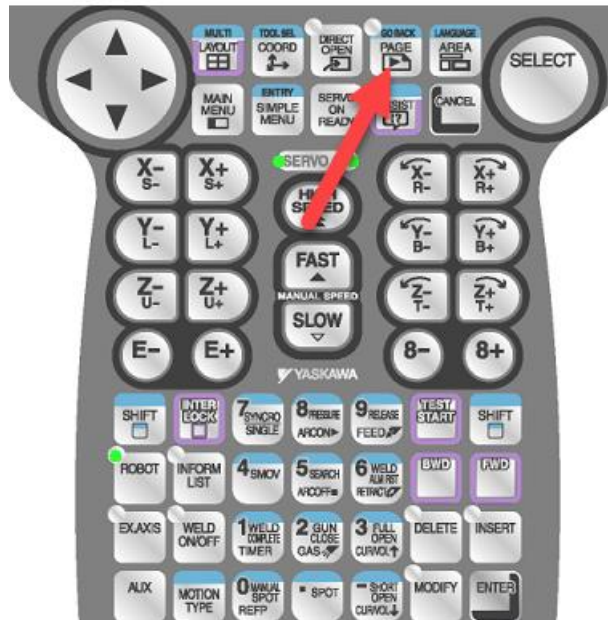
This document captures ideas, experiences, and informal recommendations from the Yaskawa Partner Support team. It is meant to augment – not supersede manuals or documentation from motoman.com. Please contact the Partner Support team at partnersupport@motoman.com for updates or clarification.

Though you can view multiple screens at once, sometimes this is too small to effectively use this as you want. If you press SHIFT + MULTI LAYOUT, the pendant will switch to one screen which was selected in multi view.



This document captures ideas, experiences, and informal recommendations from the Yaskawa Partner Support team. It is meant to augment – not supersede manuals or documentation from motoman.com. Please contact the Partner Support team at partnersupport@motoman.com for updates or clarification.

From here you can cycle between the screens that you have already setup by pressing the PAGE button on the pendant.



This will allow you to change through your selected windows and view each one in full screen.

If you wish to return to the multi view layout, just press SHIFT+MULTI LAYOUT again and all the screens will be displayed again.